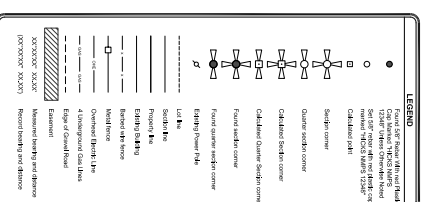
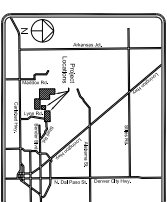
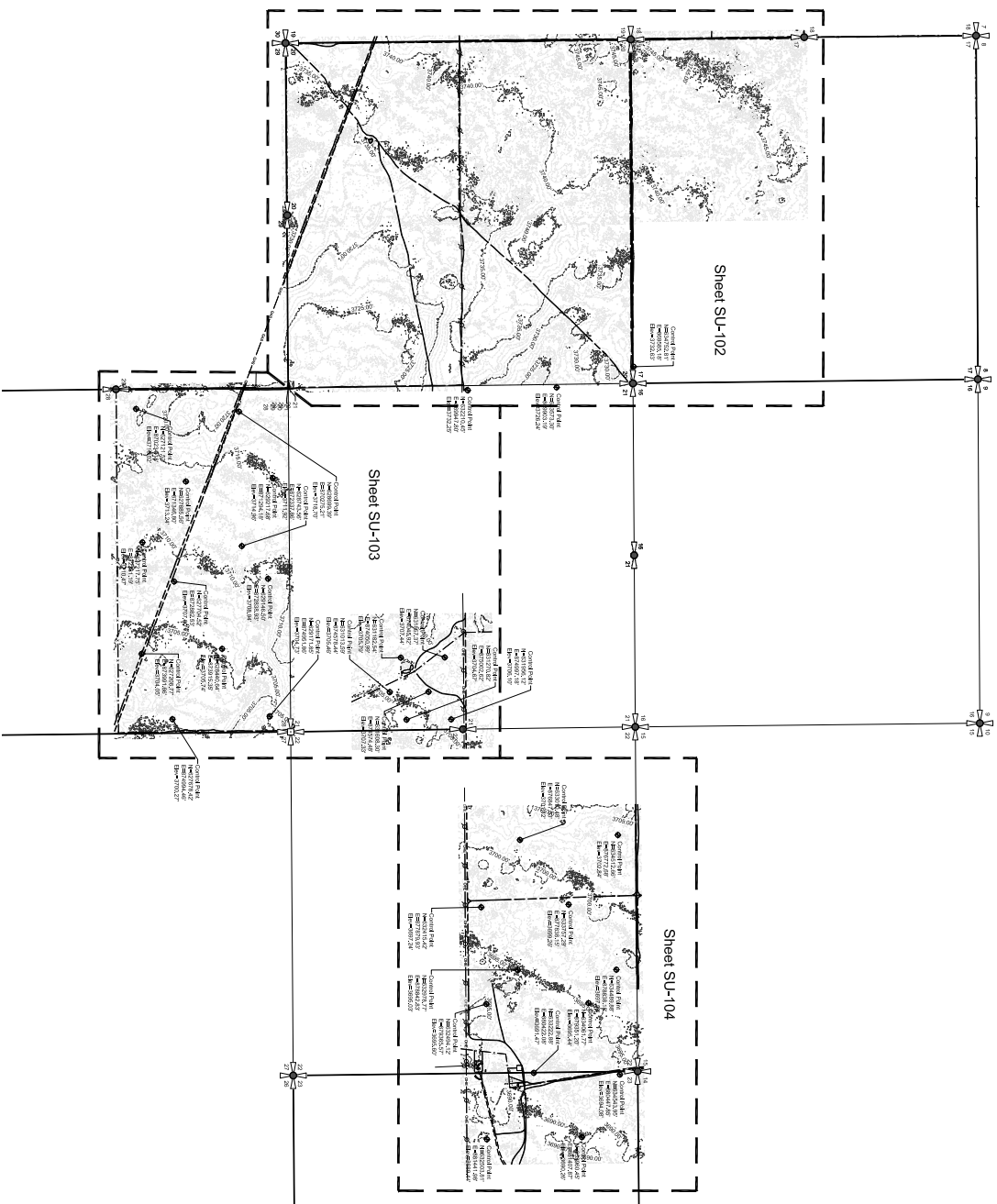


# BOUNDARY AND TOPOGRAPHIC SURVEY

OF THE SW 1/4 OF SECTION 17, SECTION 20, NE1/4 OF SE1/4 OF SECTION 21, E1/2 OF NW1/4 AND NE1/4 OF SECTION 22, E1/2 OF NW1/4 OF SECTION 23, AND THE N1/2 OF SECTION 28, T18S, R37E, N.M.P.M., CITY OF HOBBS, LEA COUNTY, NEW MEXICO



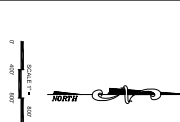


**PETTIGREW & ASSOCIATES PA**  
ENGINEERING | SURVEYING | TESTING  
REPUTATION | QUALITY | INTEGRITY  
100 E. Hondo, Suite 100 Hobbs New Mexico 88240  
757.393.8827 • 757.393.1543  
Hobbs, New Mexico



**PROFESSIONAL ENGINEER**  
NEW MEXICO  
No. 12345  
Exp. 12/31/2025

PROJECT SUPERVISOR: P. Gonzalez  
DESIGNER: A. Thompson



0 200 400 600 800 1000  
Feet

**OWNER:** Sider USA NM AGR LLC

**LOCATION:** OF THE SW 1/4 OF SECTION 17, SECTION 20, NE1/4 OF SE1/4 OF SECTION 21, E1/2 OF NW1/4 AND NE1/4 OF SECTION 22, E1/2 OF NW1/4 OF SECTION 23, AND THE N1/2 OF SECTION 28, T18S, R37E, N.M.P.M., CITY OF HOBBS, LEA COUNTY, NEW MEXICO

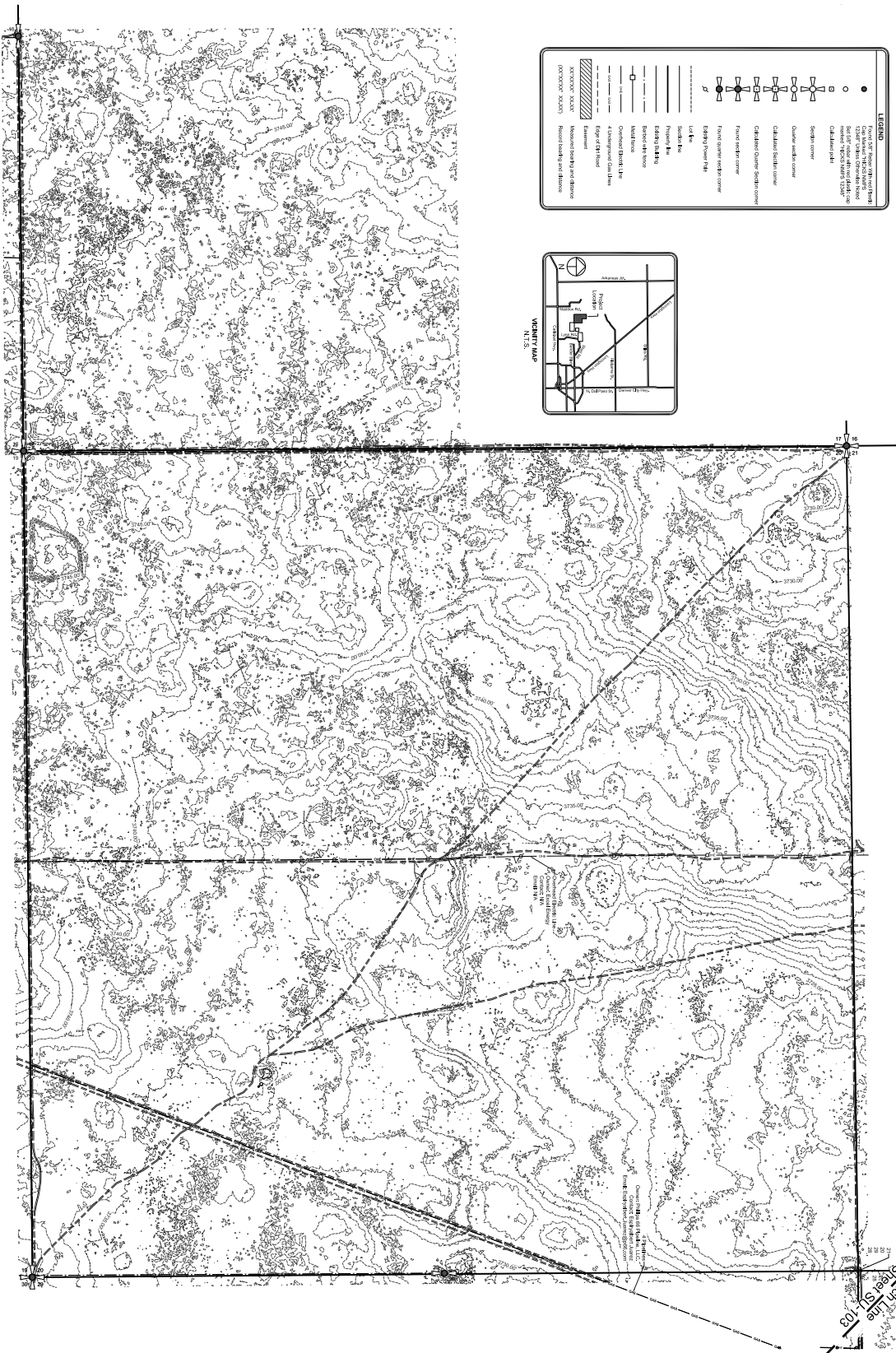
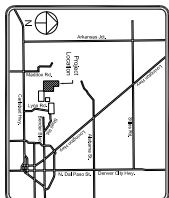
REVISIONS	
No.	DESCRIPTION

**BOUNDARY AND TOPOGRAPHIC SURVEY**  
OF  
**AC RANCH PROJECT**

**PROJECT NUMBER:** 2017.1110

**SHEET:** 1 of 6  
**SU - 101**

OF THE SW 1/4 OF SECTION 17, SECTION 20, NE1/4 OF SE1/4 OF SECTION 21, E1/2 OF NW1/4 AND NE1/4 OF SECTION 22, E1/2 OF NW1/4 OF SECTION 23, AND THE N1/2 OF SECTION 28, T8S, R37E, N.M.P.M., CITY OF HOBBS, LEA COUNTY, NEW MEXICO.



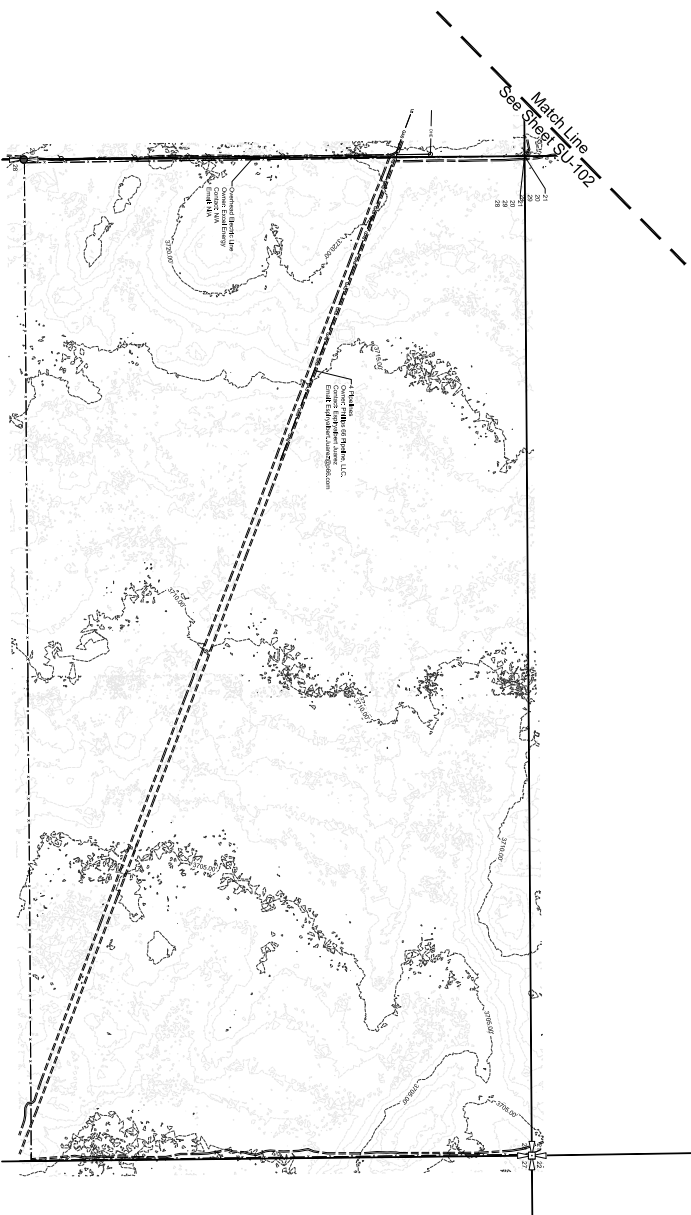
Match  
See 6

2017.1110

SHEET: 2 of 6

SU - 102

OF THE SW 1/4 OF SECTION 17, SECTION 20, NE1/4 OF SE1/4 OF SECTION 21, E1/2 OF NW1/4 AND NE1/4 OF SECTION 22, E1/2 OF NW1/4 OF SECTION 23, AND THE N1/2 OF SECTION 28, T18S, R37E, N.M.P.M., CITY OF HOBBS, LEA COUNTY, NEW MEXICO.



**LEGEND**

Found 1st Round With our Plaster  
One Member Thinks NAFPS  
12345 unless Chromite heard  
See 1st round 4th row 1st 2nd 3rd  
member Thinks MAFPS 12345  
Calculates path

Seal/In corner

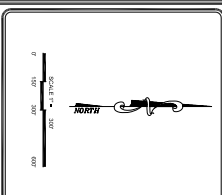
[illegible]

PROJECT NUMBER:  
2017.1110

SHEET: 3 of 6  
SU - 103



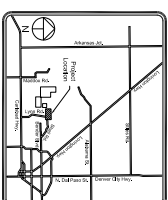
PROJECT SURVEYOR:  
P. Gonzalez  
DRAWN BY:  
J. Dominguez

INDEXING INFORMATION  
FOR COUNTY CLERK

**LOCATION:**  
OF THE SW 1/4 OF SECTION 17,  
SECTION 20, NE 1/4 OF SE 1/4 OF  
SECTION 21, E 1/2 OF NW 1/4 AND NE 1/4  
OF SECTION 22, E 1/2 OF NW 1/4 OF  
SECTION 23, AND THE N 1/2 OF  
SECTION 28, T18S, R37E, N.M.P.M.,  
CITY OF HOBBS, LEA COUNTY,  
NEW MEXICO



OF THE SW 1/4 OF SECTION 17, SECTION 20, NE1/4 OF SE1/4 OF SECTION 21, E1/2 OF NW1/4 AND NE1/4 OF SECTION 22, E1/2 OF NW1/4 OF SECTION 23, AND THE N1/2 OF SECTION 28, T8S, R37E, N.M.P.M., CITY OF HOBBS, LEA COUNTY, NEW MEXICO.



**LEGEND**

Found at Road With no Plaque  
On Memorial Highway  
123456 unless otherwise noted  
See also notes at end of book  
missing "HICKS MAPS 123456"  
Citations only

See also notes

[illegible][illegible]

**DESIGNED BY:**  
P. Gonzalez  
J. Dominguez



 **PETTIGREW**  
& ASSOCIATES PA  
ENGINEERING | SURVEYING | TESTING  
DEFINING QUALITY SINCE 1965  
100 E. Navajo, Suite 100 Hobbs New Mexico 88240  
T 505 393 9827 F 505 393 1543  
Pettigrew.us